



### SPECIFICATIONS & ACCESSORIES

**Housing:** 1.5 mm Stainless steel  
EN1.4404 Ventilated

**IP66**

**Front:** 3 mm PC long life UV-resistant, self extinguishing.

**Anti-graffitti laminated**

**Light source:** LED 4000K

**Luminance:** 300 cd/m<sup>2</sup>

**Consumption:** 2 W

**Cable:** Radox 125 2x0,75mm<sup>2</sup>.  
Self extinguishing  
EN50363, IEC60332-1,  
IEC60332-3  
3 m

**Drivers:** (See appendix A)  
Model 91 Individual (Fused, wiring thru) Model 24 Groups

**Options:** Powder coated

IP66 LED 2W 300CD/m<sup>2</sup> 50 m

**JUNO INFRA 5030S**  
Escape route sign LED

Designed for infra structure instalments.

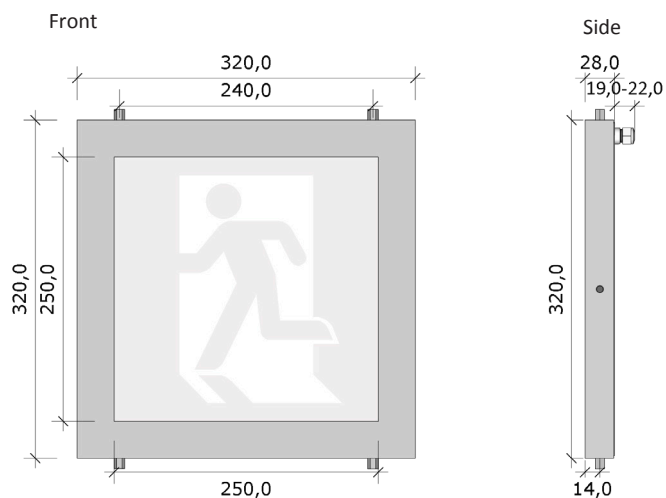
Housing in stainless steel EN 1.4404 and front in UV resistant, self extinguishing polycarbonate with laminated easy-to-clean protection.

IP66.

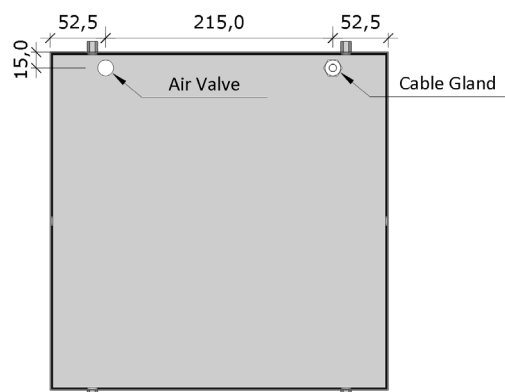
Single sided. High luminance

Central supply 230V AC/DC. Driver can be individual (Driver 91) or for groups (Driver 24).

CE branded. Made in Sweden



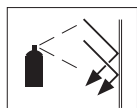
Back



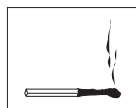
4 x Distance Bolt M6, thread 7,0 mm



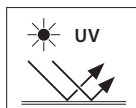
ROBUST



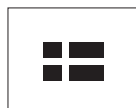
ANTI-GRAFFITTI  
LAMINATED



SELF  
EXTINGUISHING



UV- RESISTANT



MADE IN  
SWEDEN

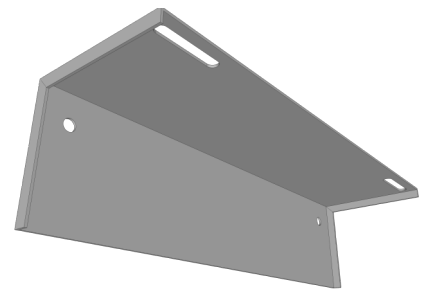
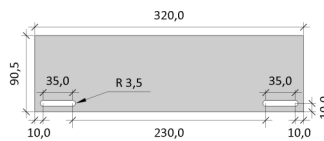
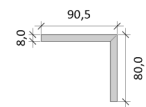
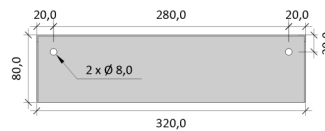




 2W 300CD/m<sup>2</sup>  50 m

### 19704 WALL BRACKET

**FUNKTION** Mounting on wall, Offers space behind the luminaire to install driver 91  
**MATERIAL** 2 mm stainless steel EN1.4404



### 19802 WALL BRACKET

**FUNKTION** Fits 2 luminaires 5220S in 100° angle to provide visibility from all directions. Prepared for optional fixing of beacon 5310.  
**MATERIAL** 2 mm stainless steel EN1.4404

